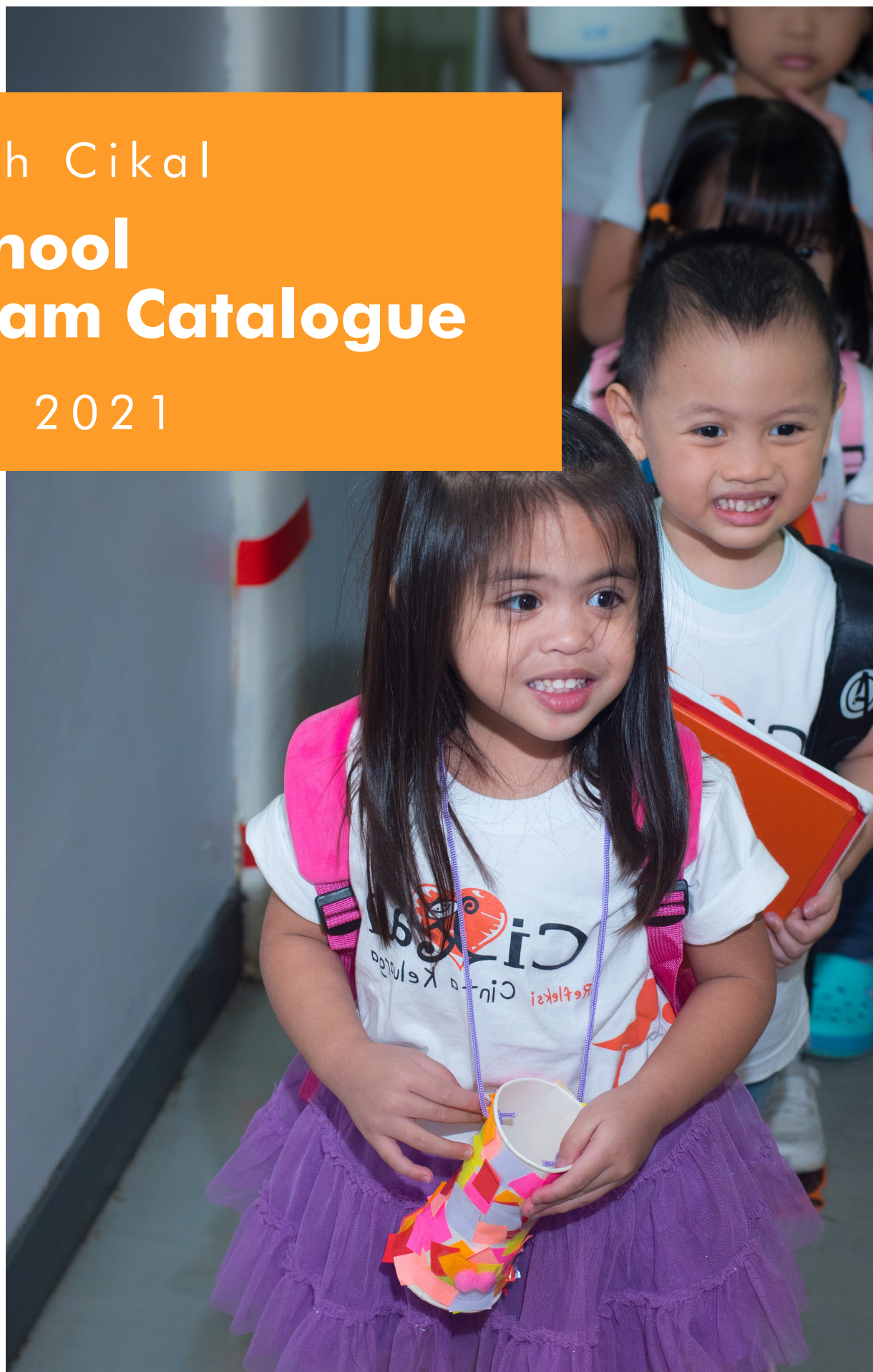


[www.cikal.co.id](http://www.cikal.co.id)

# Sekolah Cikal Preschool Program Catalogue

2020 - 2021



# Table of Contents

Foreword from Head Of School	3
Overview	4
Learning Phase	6
5C's	7
The Principles of Sekolah Cikal Program	10
Program Selection Flow	12
Program Group's	14
Compulsory Credit	16
Personalized Curriculum Circle	18
Program Description	22
School Location	56

## Foreword from Head of School



The world is changing rapidly, and the pandemic accelerate the process in many aspects of our life. While it has been a very challenging part for all of us in Cikal community, we also find ourselves becoming more confident in the importance of nurturing our Cikal 5stars competencies and practicing Cikal 5cs in the teaching and learning process, whether it's at school or at home. The next academic year of 2020/2021 will be a continues adaptation. As per our plan to continue transforming beyond the conventional definition of schooling, we are sure the implementation of our personalized curriculum circle for each and every single one of our students, our competencies based digitally integrated curriculum for all levels, will be even more fun and meaningful. This program catalog is a compilation of our "cakupan", the most tangible part of our curriculum circle, and an essential part of our academic route. The selection period will enhance conversation between parents, teacher and students - but the reflection process throughout the years will be a lifelong journey of bridging our children as a leader to the future.

Thank you for being here!

**Najelaa Shihab**  
**Head of School Cikal**





# Overview

## Cikal Curriculum 5 Stars & 5 Cs

Cikal 5 stars competencies are our main objectives implemented in the whole school atmosphere planning, teaching and assessing in all level of interaction. Our aim is to be a community of lifelong learners making a difference through everything we do, every single day. The question of whether we “practice what we preach” is a continuous reflection in the way we do things between all members of our community educators, parents, students.

The Cikal 5 Stars competencies are a range of competencies which consist of specific knowledge, attitudes, skills and actions, which we believe are important for the development of the whole-person.

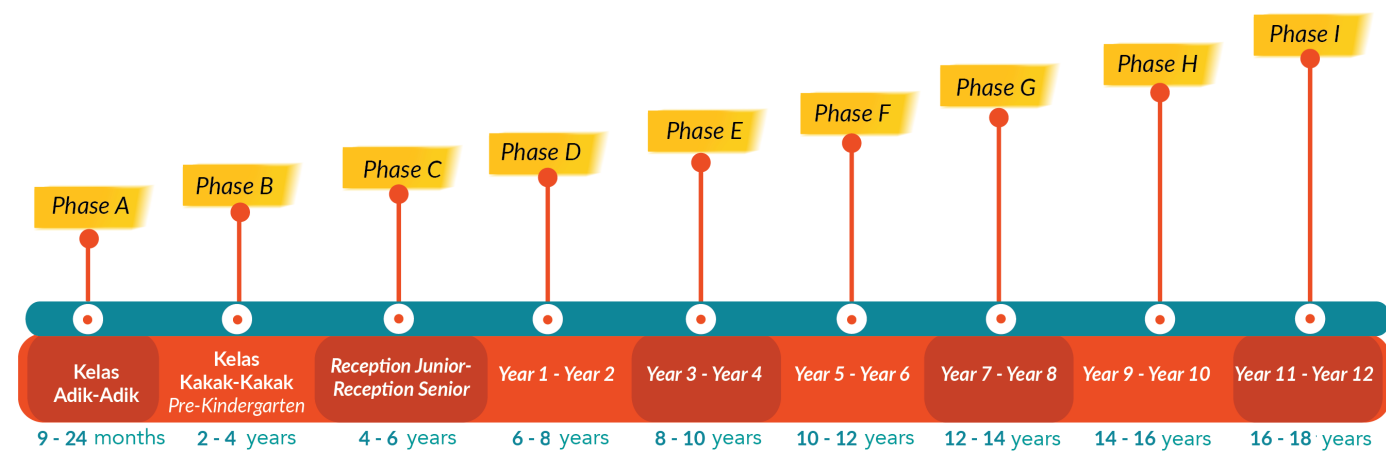
To have measurable learning outcomes, 5 Stars Competencies are translated into 14 dimensions of competency. The dimensions are then manifested into the curriculum towards the learning outcomes. The 14 dimensions of Sekolah Cikal 5 Stars Competencies are:



<p>Emotionally, Morally, and Spiritually Rich</p> <p>We experience and strategize emotions within personal and social relationships, respect the dignity and rights of all human beings for no utilitarian reasons but for our own sake. We base our belief and practice on a conviction that there is a transcendent God dimension of life.</p>	Balanced	Learner has developed a sound grasp of him/herself. Hence, he/she is able to use appropriate problem solving approaches while maintaining humility, hope and humor
	Cooperative	Learner understands, manages and communicate her/his emotions effectively to work in a team. Learner is able to resolve conflicts and or other challenging situations in a kind, respectful and empathetic way.
	Principled	Learner reflects his/her conviction of a transcendent divine dimension of life by being aware of the essence of faith and purpose, developing out appreciation towards ethics and practicing through our action on a daily basis.
<p>Skillful and Effective Thinker</p> <p>We are persistent to analyze problems, offer plausible solutions and exercise initiatives in making reasoned, ethical decisions,</p>	Intelligent	Learner develops refine thinking skills. She/He generate ideas, identify problems and make planning to organize our thoughts, inquire new concepts and create new solutions. Learner can make connection among ideas or concepts for constructing our own meaning.
	Innovative	Learner analyzes his/her own problems and determines suitable strategies and approaches to find solutions. Learner applies responsible logical reasoning to anticipate any potential consequences exist as a result of our decisions.
	Communicative	Learner has sound information literacy that enables them to access information precisely. He/she is able to distinguish reliable information for supporting his/her understanding. Later more importantly, learner can express him/herself confidently by using effective means of communication including using technology-based tools.
<p>Self-regulated Learner</p> <p>We constantly reflect, adapt our thoughts and actions towards changing environments for attaining our goals</p>	Committed	Learner is goal-oriented, capable to commit to our goals. Learner is enthusiastic and eager to keep developing him/herself in many aspects.
	Self-Reliant	Learner shows his/her capacity to identify and to arrange our priorities in completing his/her duties. Learner responds with renewed efforts to setbacks or challenges, and can discover successful strategies in order to work independently and adaptively.
	Reflective	Learner assesses him/herself referring to his/her strengths and limitation. Learner understands what needs to improve and how he/she can improve him/herself. Learner are very reliable to rate his/her achievements and progress.
<p>Broadminded and Physically Sound</p> <p>We value the importance of nurturing our curiosity for lifelong learning, exploring knowledge for conceptual understanding and maintaining healthy lifestyles in its contribution to achieve our well-being,attaining our goals</p>	Healthy	Learner understands the significance of healthy lifestyles in one's well-being, and shows commitment to practice appropriate hygiene and self-care. Learner also makes initiatives to promote healthy lifestyle to his/her surrounding on a daily basis from our very own practice
	Open-minded	Learner understands the significance of healthy lifestyles in one's well-being, and shows commitment to practice appropriate hygiene and self-care. Learner also makes initiatives to promote healthy lifestyle to his/her surrounding on a daily basis from our very own practice
	Caring	Learner is able to understand other people's needs, and being thoughtful towards our actions and decisions that may impact on others. Learner collaborate with others to empower community respectfully for improving his/her perspectives about life and initiating actions to preserve environment, peace and well being.
<p>Empowering member of just, sustainable and peaceful global society</p> <p>We are committed to act on any issues that share local and global significance, promote peace and make a positive difference in the world we live in.</p>	Action-Oriented	Learner can plan, implement and evaluate our actions based on certain standards, criteria and conditions. He/she is able to offer plausible solutions and continued contributions, which may enable certain community to create a better situation.
	Impactful leading	Learner can initiate and encourage others to participate, to lead genuinely any attempts, which may improve a better understanding, build an awareness of global issues and make positive difference for ourselves and other people.

Understanding that competency grows differently in every individual, Sekolah Cikal believes that personalization is the key to nurture it at their best. According to the U.S. Department of Education (2010), personalized learning is when instruction is paced to learning needs, tailored to learning preferences, and tailored to the specific interests of different students. The students drive his or her own learning, connect learning with interests, passions, and aspirations, develop the skills to select and use appropriate technology and resources to support learning, demonstrate master of content in a competency-based model, employ assessment as learning, becomes a self-directed learner who monitor progress and reflect on learning based on mastery of the knowledge and skills.

# Learning Phases in Cikal



The process to attain the competencies are divided into 9 (nine) phases from Preschool to Secondary School as follow:

Phase A	9-24 months old
Phase B	24-60 months old
Phase C	Reception Junior-Reception Senior (4 - 6 years old)
Phase D	Year 1 - Year 2 (6 - 8 years old)
Phase E	Year 3 - Year 4 (8 - 10 years old)
Phase F	Year 5 - Year 6 (10 - 12 years old)
Phase G	Year 7 - Year 8 (12 - 14 years old)
Phase H	Year 9 - Year 10 (14 - 16 years old)
Phase I	Year 11 - Year 12 (16 - 18 years old)

The phases above shows how curriculum levels typically relate to years at school. Many students do not, however, fit this pattern. They include students with special learning needs, students who are gifted, and students with no prior knowledge of the language being learned, regardless of their school year.

# Cikal Curriculum Circle

As we explain Cikal 5 Stars Competencies as our vision and mission, our curriculum circle below will give clear connection between the school’s vision and mission as “Cita”, the way or “Cara” in which learning interaction happens, and the school’s program as “Cakupan” or vehicle for every member of school community to develop their 14 dimensions to the fullest



## Core Circle: Sekolah Cikal Aim (5 Star Competencies)

Sekolah Cikal Curriculum aim the 5 Star Competencies. It is broken down into 14 dimensions. The 14 dimensions are translation of Sekolah Cikal 5 Star Competencies in the form of competences that can be measured. The specific learning outcomes throughout these dimensions will later be expressed in curriculum documents and called the written curriculum.

## Middle Circle: Sekolah Cikal Way (5Cs)

The second part of the curriculum model defines the Sekolah Cikal Way in attaining the 5 Stars Competencies. The Sekolah Cikal Way consists of the strategies of delivery and called the taught curriculum.



## CHALLENGING CHOICES

### HOW CAN I MOVE FORWARDS FROM MY CURRENT SITUATION?

LOOKS LIKE	DOESN'T LOOK LIKE
Enthusiastically adopt and adapt to new challenges arise as a consequence of learning process	Showing resistance and rigidity in dealing with challenges
Exemplify different strategies or approaches to enhance one's capacity to keep improving	Easily satisfied and comfortable with certain situation and condition that tend to refuse being challenged
Assertively challenge and criticize old practices in order to create a new one	Remain indifferent and unwilling to challenge old ways of doing things

## COMMUNITY CONTEXT

### "HOW AM I ABLE TO MAKE A DIFFERENCE?"

LOOKS LIKE	DOESN'T LOOK LIKE
Always exercise action-oriented attitude when solving problems	Only criticise and complain upon ill situation and condition without wanting to offer any solution
Seek for effectiveness and sustainability of one's actions to enable wider impacts to communities	Create quick-fixes to any issues that may not be addressing the underlying problems
Update myself with current issues to create opportunities to be involved and contribute in community based acts	Showing minimum of care and sympathy towards any issues affecting communities and the world

## CHARACTERIZED

### HOW DO I UNDERSTAND ABOUT MY GOALS, AND KNOW HOW TO ACHIEVE THEM?

LOOKS LIKE	DOESN'T LOOK LIKE
Realize what have become my learning needs and learning goals, and know any possible ways to attain them	Confused what are my learning needs and my learning goals
Correlate with other people who may be able to help me achieve my goals	Having a "me" vs. "them" attitude, unable to involve other people and collaborate with them to achieve the goals, or meet my learning needs
Constantly evaluate own efforts to measure their effectiveness, and whenever necessary is willing to consider different alternatives	Fixated with only one or few strategies, reluctant to try other different ways
Understand when I have made progress and am aware whichever areas of improvement	Only taking learning as a never-ending journey that I have to undergo, one school day after another repeatedly as routine

## CONSTRUCTIVE CONTINUITY

### "HOW CAN I CONTINUE TO IMPROVE MYSELF?"

LOOKS LIKE	DOESN'T LOOK LIKE
Consistently do self and peer reflection in order to seek perspectives and to get more inputs about my strengths and weaknesses	Feel satisfied with current achievement or progress
Track my progress and am familiar with my areas of improvement as I renew my (learning) goals	Tend to be confused with what to do next after some goals are achieved
Cultivate a growth mindset and always have a 'can-do' attitude	Fixed mindset; am reluctant to seek other opportunities to keep growing

## COMPREHENSIVE CONCEPT

### WHY AM I DOING THIS? WHAT ARE THE CONSEQUENCES OF MY ACTIONS?

LOOKS LIKE	DOESN'T LOOK LIKE
Always seek for understanding of why a learning takes place and why certain action needs to do	See learning as a remote experience designed and prescribed that I have nothing to do with it
Familiarize myself with existing learning objectives and estimate how I will be able to achieve them while considering any possible challenges that may appear during the process	Experience learning as a must-to do, and assessments as what the teacher has to do to take scores
Anticipate any potential impacts for every actions taken and every decision made	I do things because others are telling me so, thus I do not know what will happen afterwards as result

## Outer Circle: Sekolah Cikal Program

This is the outer layer of the Sekolah Cikal Curriculum Circle. Sekolah Cikal Personalized Cikal Programs consist of the Required and Elective Programs that refers to the needs and interests of each individual student. Every student will have their own Personalized Curriculum Circle, allowing them to choose programs that support their prioritized dimension.

# The Principles of Sekolah Cikal Program

Programs in Sekolah Cikal is a set of curriculum that its learning objectives are organized in phases (of competency development). All programs are the media in which students use to achieve the prioritized dimension. Below are some principles for Programs in Sekolah Cikal:

## 1. Cross site implementation

Students are allowed to choose and join programs from different sites of Sekolah Cikal to cater their needs and interests.

## 2. Type of Class

Some program groups are given options to be implemented offline AND blended. The blended type of class is only applied in Language Studies, Social Studies, and Math program groups for Year 7 up. While these program groups are given options of offline and blended, SSC program group is ONLY offered blended.

## 3. All programs comply to the same standards and expectation

Regardless the amount of the credit, or whether the program is held after school or within the school hour, every program is the same. Every student might has unique timetable and whether a program is "required" or "elective" refers to every student's needs. The used to be called "club" is just a program, the same as others.

## 4. The length of every program is minimum one semester

The discussion on how the students perform in a program will be done every term during PCC Talk. The students can only change program or change type of class, the minimum after 1 semester, except for yearly program.





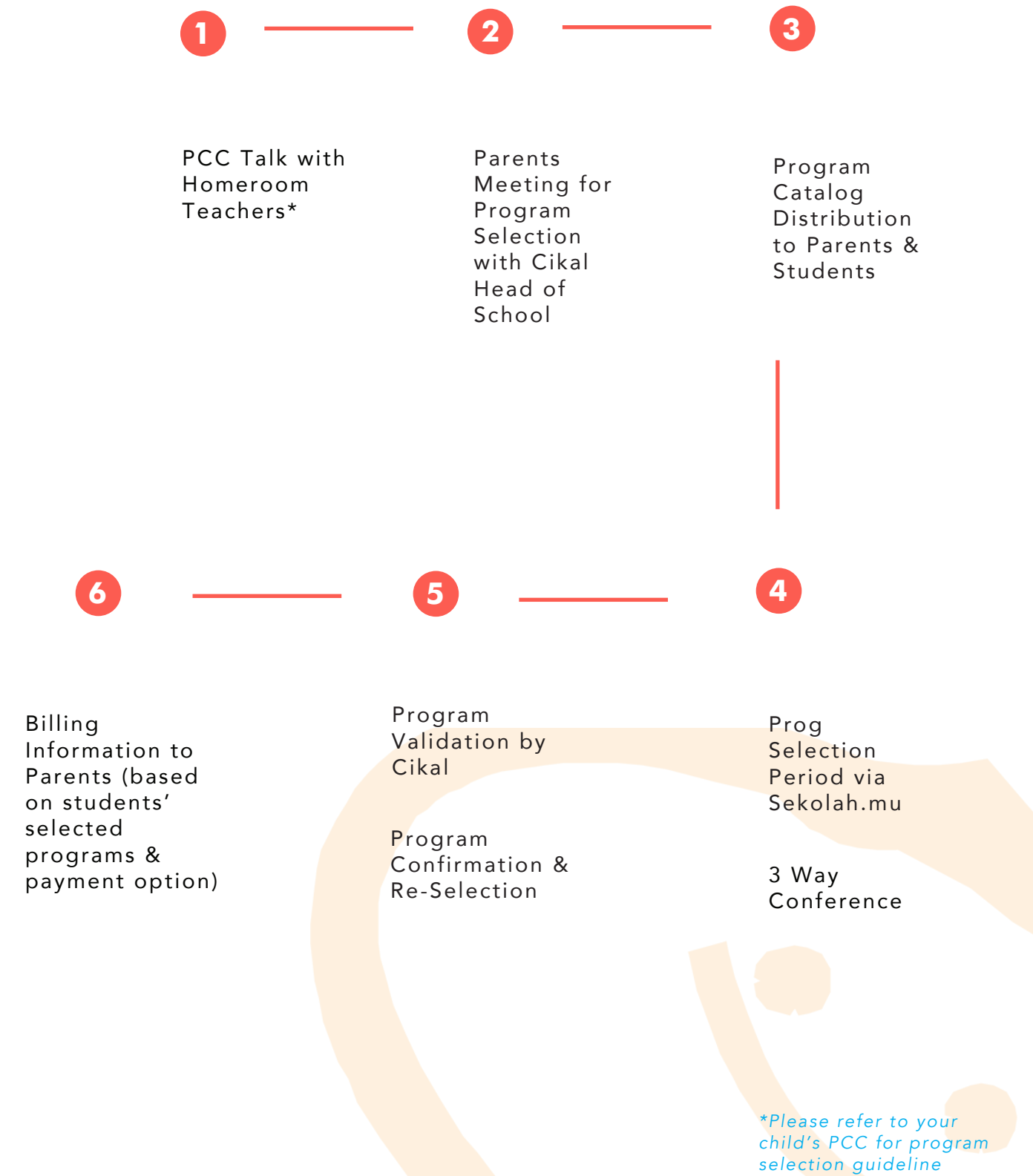


# Program Selection Flow



## Program Selection Flow

Program selection is a period in which students choose programs for the next academic year, with recommendations from homeroom teachers and approval from parents.





# Program Group's

There are 3 Program Groups in Rumah Main Cikal, our preschool level. During these 1st years of life, the preschool students get exposures on 4 dimensions only: Intelligent, Communicative, Balanced, Caring. These dimensions are mapped in Early Childhood And Service Learning Program Group

## Early Childhood

Children learn as they play. Most importantly, in playing children will reflect on how to learn. Rumah Main Cikal has been designed to equip children through their early years (1 - 5 years old), covering preschool and reception level. Each child's uniqueness and potential will be unfolded here by our dedicated teachers through daily interaction and play-based programs. We foster every child's curiosity to discover, learn, and explore its surroundings happily.

Focused Dimension: Intelligent, Communicative, Balanced, Caring.

Example of program: Aku Sebagai Individu, Aku Sebagai Warga Dunia, Aku dan Ekspresiku, Aku dan Eksplorasi.

## Service Learning

Sekolah Cikal respects the needs of its learners to develop their comprehension on their Service Learning is characteristically a form of experiential learning where learners are given opportunity to integrate community service with the structured learning taking place in the classroom in order to enrich their learning experiences of the course material. Service Learning activities and programs are delivered through the connection to certain academic courses and through the service learning community. In Sekolah Cikal, Service Learning program is commonly known as Cikal Aksi-Aksi. It commits to any community service actions that have sustainable impacts and tend to go beyond than just a superficial action as giving donation or volunteering. It is ought to provide learners challenges to enhance level of critical thinking and creativity in offering plausible solutions.

Focused Dimension: Caring, Reflective, Impactful Leading

Example of program: Cikal Aksi-Aksi

## PHE

Physical and Health Education (PHE) is a program focuses on developing physical fitness and the ability to perform and enjoy day-to-day physical activities with ease. Regular physical education classes prepare kids to be physically and mentally active, fit, and healthy into adulthood.

The "health" part of the program shows how the benefits of regular exercise and healthy food choices along with the risks of inactivity and poor diet, is an important variable in PHE curriculum. Students of all ages might be asked to dedicate themselves to making a few small improvements in diet and exercise for a period of six weeks. They would be expected to journal about how they feel during the process and reflect on how these changes affect performance and mood.

Not only that, PHE also helps students develop social skills. For example, team sports help them learn to respect others, contribute to a team goal, and socialize as a productive member of a team.

Focused Dimension: Healthy, Cooperative, Self-Reliant, Balanced, Intelligent.

Example of program: PHE, Health In Me, Funletics, Zumba, etc.





# Compulsory Credit

Compulsory credit is a minimum credit for each student in Sekolah Cikal, in every level. The fulfillment of this requirement will ensure the students have enough exposure for the 14 dimensions of our 5 Stars Competencies and their own prioritized dimension which can be changed from time to time.

**This minimum credit does not apply to preschool and reception level. But the students from these levels still need to fulfill the minimum amount of program per year.**

Program Group	Early Childhood	Service Learning
Program	Aku Sebagai Individu, Aku Sebagai Warga Dunia, Aku dan Ekspresiku; Aku dan Eksplorasiku	Cikal Aksi-Aksi
AA	2 program/semester; 4 program/year	1 program/semester; 2 program/year
KK	2 program/semester; 4 program/year	1 program/semester; 2 program/year
PK	22 program/semester; 4 program/year	1 program/semester; 2 program/year



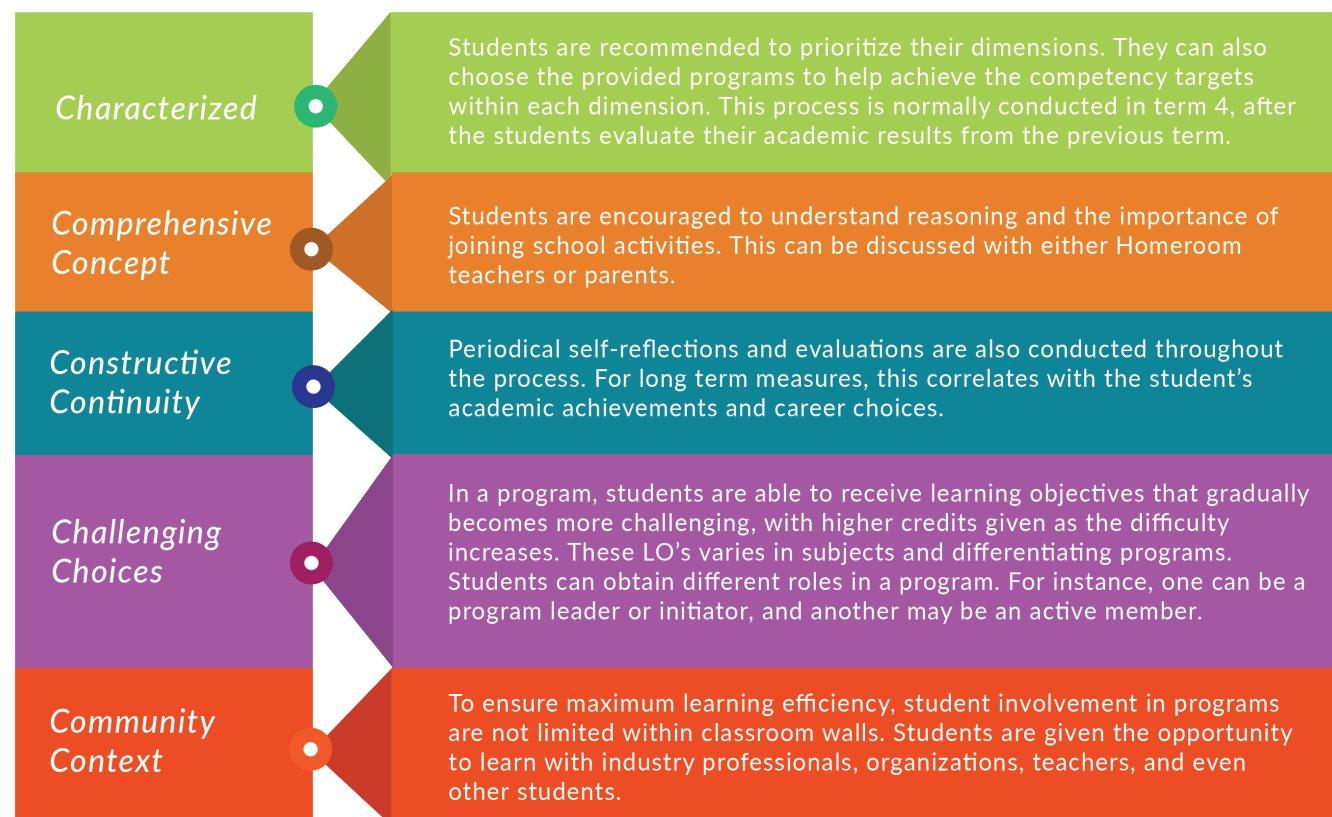


# Personalized Curriculum Circle

PCC is a curriculum constructed for each individual in Cikal, based on everyone's unique needs and interests, of which includes students, parents, and the Cikal team. Within PCC, there are specific dimension priorities for that particular academic year.

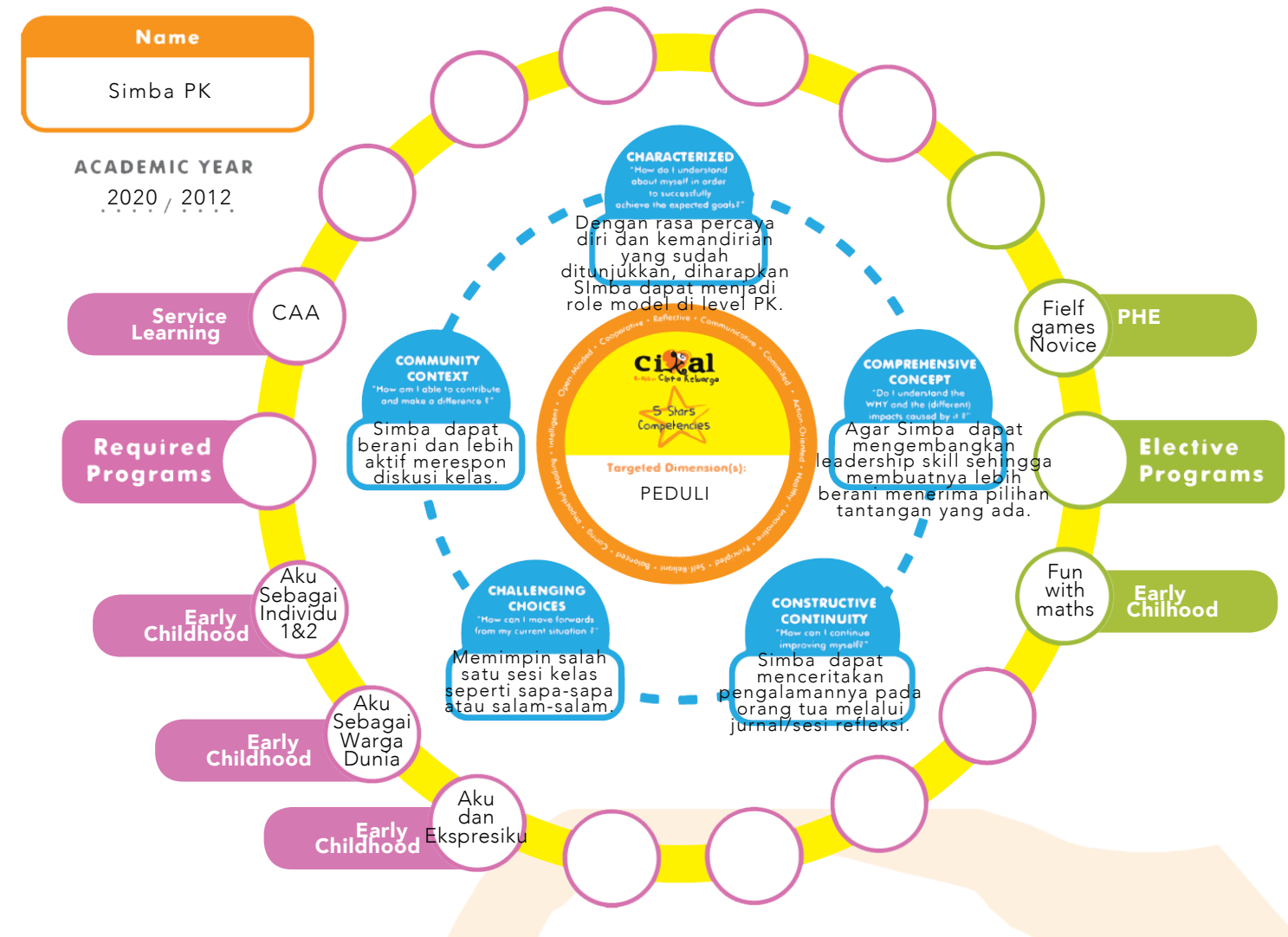
Students will have the opportunity to choose certain programs as vehicles or media to show the mastery of the dimension priorities.

During the PCC discussion, we also utilize the 5Cs methods:



The term "required" and "elective" implies to student's unique needs and interest. Therefore the composition of required and elective for each student will be varied, and **listed in PCC**.

- Required programs in Sekolah Cikal defines programs that are mandatory for one particular student, as needed to achieve his/her prioritized dimension.
- Elective programs in Sekolah Cikal defines programs that emphasizes more on the student's interests and enrich students achievement on certain dimensions.



- The "Required" and Elective" programs may differ for each student, based on individual needs
- The composition of required and elective programs, might be different from one student to another.
- Homeroom teacher will recommend some programs during the student's PCC Talk.
- The final PCC will be discussed during the 3-Way-Conference.
- Parents then will do the selection through sekolah.mu.
- Please refer to the student's final PCC dan the Program Catalogue during the selection.



Kelas Prekindie - Pakubuwono				
Program Group	Program yang diambil murid	Jumlah program yang diambil murid/tahun	Jumlah Program minimal/ tahun	Program Fee
Early Childhood	Aku sebagai individu (smt 1& 2)	2	2 program per smt/ 4 program per tahun	1,080,000
	Aku sebagai warga dunia (smt 2)	2		1,080,000
	Aku dan ekspresiku (smt1)	1		1,080,000
	Fun with Math (online)	1		100,000 (per semester)
Service Learning	Cikal Aksi-aski (smt 1&2)	2	2 program per tahun	540,000
PHE	Field games Exploratory (cilandak) smt 1 saja	1		434,000
Tuition monthly smt 1				3,134,000
Tuition monthly smt 1				2,700,000
Tuition per semester				100,000





# Program Description

## Pre-school

## Early Childhood

### Aku Sebagai Individu (AA)

Program Code : EASISAA

Dalam program ini murid belajar mengenai diri sendiri sendiri dan cara menjaga diri sendiri (didalam nya termasuk panca indera dan pola hidup sehat).

### Aku Sebagai Warga Dunia (AA)

Program Code : EASWSAA

Dalam program ini murid belajar mengenai interaksi antar makhluk hidup lain serta tanggung jawab sebagai warga dunia (didalamnya termasuk peran dan kebutuhan makhluk hidup, habitat dan lingkungannya)

#### Price:

School Loc.	Type of Class
	Offline
RMC BDG	520,000/month 3,120,000/semester 5,720,000/annual
RMC BIN	560,000/month 3,360,000/semester 6,160,000/annual
RMC CIL	600,000/month 3,600,000/semester 6,600,000/annual
RMC PAKU	600,000/month 3,600,000/semester 6,600,000/annual
RMC SER	560,000/month 3,360,000/semester 6,160,000/annual
RMC SUR	688,000/month 4,128,000/semester 7,568,000/annual

#### Program Leaders :

Dewi Parisma, Intan Himawan, Zefanya Dena Talisa, Ayunda Septiani, Ari Budi Kusumastuti, Gilang Puspitasari, Dewi Parisma, Irma Novitasari, Maya Meidiana, Ana Ahmilu, Wike Yuniati, Ayunda Septiani, Ari Budi Kusumastuti, Ana Ahmilu, Bayu Putra Pratama, Melviani Rayina Eka, Natalia, Ahmad Fadhillah, Izha Siti Chodizah, Fitri Nurhayati, Putri Nurul Aisyah

#### Price:

School Loc.	Type of Class
	Offline
RMC BDG	520,000/month 3,120,000/semester 5,720,000/annual
RMC BIN	560,000/month 3,360,000/semester 6,160,000/annual
RMC CIL	600,000/month 3,600,000/semester 6,600,000/annual
RMC PAKU	600,000/month 3,600,000/semester 6,600,000/annual
RMC SER	560,000/month 3,360,000/semester 6,160,000/annual
RMC SUR	688,000/month 4,128,000/semester 7,568,000/annual

#### Program Leaders :

Dewi Parisma, Intan Himawan, Zefanya Dena Talisa, Gilang Puspasari, Novarita Ariefatur Rahmayanti, Muhammad Irfan Faisal, Ahmad Fadhillah, Izha Siti Chodizah, Litya Prasidiya, Dara Farhana, Irma Novitasari, Ayunda Septiani, Ari Budi Kusumastuti, Maya Meidiana, Ana Ahmilu, Bayu Putra Pratama, Natalia, Ahmad Fadhillah, Wike Yuniati, Melviani Rayina Eka, Izha Siti Chodizah, Fitri Nurhayati, Putri Nurul Aisyah



# Early Childhood

## Aku dan Eksplorasi (AA)

Program Code : EAEPSAA

Dalam program ini murid belajar menstimulasi pemahaman terhadap hal-hal yang terjadi di sekitarnya melalui kemampuan semua penginderaan anak dalam memaknai dunia dan konteks kehidupan sehingga mereka menjadi anak yang percaya diri, berani mencoba, serta memiliki rasa ingin tahu terhadap fenomena yang ada dalam kehidupan mereka.

Price:

School Loc.	Type of Class	SSC	
	Offline	1:1	1:4
RMC BDG	520,000/month 3,120,000/semester ~annual	800,000	520,000
RMC BIN	560,000/month 3,360,000/semester ~annual	862,000	560,000
RMC CIL	600,000/month 3,600,000/semester ~annual	924,000	600,000
RMC PAKU	600,000/month 3,600,000/semester ~annual	924,000	600,000
RMC SER	560,000/month 3,360,000/semester ~annual	862,000	560,000
RMC SUR	688,000/month 4,128,000/semester ~annual	1,059,000	688,000

Program Leaders :

## Aku dan Ekspresiku (AA)

Program Code : EAESSAA

Dalam program ini murid belajar mengekspresikan perasaan, pikiran, dan ide-ide melalui bahasa tubuh, bahasa lisan, seni, gerakan dan musik maupun dukungan teknologi untuk menstimulasi dan mengembangkan aspek kemampuan berbahasa, kreativitas, dan perkembangan emosi anak.

Price:

School Loc.	Type of Class	SSC	
	Offline	1:1	1:4
RMC BDG	520,000/month 3,120,000/semester ~annual	800,000	520,000
RMC BIN	560,000/month 3,360,000/semester ~annual	862,000	560,000
RMC CIL	600,000/month 3,600,000/semester ~annual	924,000	600,000
RMC PAKU	600,000/month 3,600,000/semester ~annual	924,000	600,000
RMC SER	560,000/month 3,360,000/semester ~annual	862,000	560,000
RMC SUR	688,000/month 4,128,000/semester ~annual	1,059,000	688,000

Program Leaders :

# Service Learning

## Cikal Aksi – Aksi (AA)

Program Code : KSELSAA

Dalam program ini murid belajar untuk mengembangkan rasa kebersamaan dan kepedulian terhadap teman dan orang disekitarnya.

Price:

School Loc.	Type of Class
	Offline
RMC BDG	260,000/month 1,560,000/semester 2,860,000/annual
RMC BIN	280,000/month 1,680,000/semester 3,080,000/annual
RMC CIL	300,000/month 1,800,000/semester 3,300,000/annual
RMC PAKU	300,000/month 1,800,000/semester 3,300,000/annual
RMC SER	280,000/month 1,680,000/semester 3,080,000/annual
RMC SUR	344,000/month 2,064,000/semester 3,784,000/annual

Program Leaders :

Dewi Parisma, Intan Himawan, Zefanya Dena Talisa, Gilang Puspasari, Novarita Ariefatur Rahmayanti, Muhammad Irfan Faisal, Ahmad Fadhillah, Izha Siti Chodizah, Litya Prasidiya, Dara Farhana, Irma Novitasari, Ayunda Septiani, Ari Budi Kusumastuti, Maya Meidiana, Ana Ahmilu, Bayu Putra Pratama, Natalia, Ahmad Fadhillah, Wike Yuniati, Melviani Rayina Eka , Izha Siti Chodizah, Fitri Nurhayati, Putri Nurul Aisyah

# Early Childhood

## Aku Sebagai Individu (KK)

Program Code : EASISKK

Dalam program ini murid belajar mengenai diri sendiri sendiri dan cara menjaga diri sendiri (didalam nya termasuk panca indera dan pola hidup sehat).

Price:

School Loc.	Type of Class
	Offline
RMC BDG	620,000/month 3,720,000/semester 6,820,000/annual
RMC BIN	720,000/month 4,320,000/semester 7,920,000/annual
RMC CIL	1,040,000/month 6,240,000/semester 11,440,000/annual
RMC PAKU	1,000,000/month 6,000,000/semester 11,000,000/annual
RMC SER	760,000/month 4,560,000/semester 8,360,000/annual
RMC SUR	700,000/month 4,200,000/semester 7,700,000/annual

Program Leaders :

Bayu Putra Pratama, Ana Ahmilu, Maya Meidiana, Natalia, Ahmad Fadhillah, Widayanto Suko, Izha Siti Chodizah, Dara Farhana, Litya Prasidiya, Wike Yuniati Zefanya Dena Talisa , Gilang Puspasari Novarita Ariefatur Rahmayanti, Muhammad Irfan Faisal, Ayunda Septiani, Dewi Parisma, Ari Budi Kusumastuti, Ana Ahmilu

## Aku Sebagai Warga Dunia (KK)

Program Code : EASWSKK

Dalam program ini murid belajar mengenai interaksi antar makhluk hidup lain serta tanggung jawab sebagai warga dunia (didalamnya termasuk peran dan kebutuhan makhluk hidup, habitat dan lingkungannya).

Price:

School Loc.	Type of Class
	Offline
RMC BDG	620,000/month 3,720,000/semester 6,820,000/annual
RMC BIN	720,000/month 4,320,000/semester 7,920,000/annual
RMC CIL	1,040,000/month 6,240,000/semester 11,440,000/annual
RMC PAKU	1,000,000/month 6,000,000/semester 11,000,000/annual
RMC SER	760,000/month 4,560,000/semester 8,360,000/annual
RMC SUR	700,000/month 4,200,000/semester 7,700,000/annual

Program Leaders :

Bayu Putra Pratama, Ana Ahmilu, Maya Meidiana, Natalia, Ahmad Fadhillah, Widayanto Suko, Izha Siti Chodizah, Dara Farhana, Litya Prasidiya, Wike Yuniati Zefanya Dena Talisa , Gilang Puspasari Novarita Ariefatur Rahmayanti, Muhammad Irfan Faisal, Ayunda Septiani, Dewi Parisma, Ari Budi Kusumastuti, Ana Ahmilu, Fitri Nurhayati, Putri Nurul Aisyah

# Early Childhood

## Aku dan Eksplorasi (KK)

Program Code : EAEPSKK

Dalam program ini murid belajar menstimulasi pemahaman terhadap hal-hal yang terjadi di sekitarnya melalui kemampuan semua penginderaan anak dalam memaknai dunia dan konteks kehidupan sehingga mereka menjadi anak yang percaya diri, berani mencoba, serta memiliki rasa ingin tahu terhadap fenomena yang ada dalam kehidupan mereka.

Price:

School Loc.	Type of Class	SSC	
	Offline	1:1	1:4
RMC BDG	620,000/month 3,720,000/semester ~annual	954,000	620,000
RMC BIN	720,000/month 4,320,000/semester ~annual	1,108,000	720,000
RMC CIL	1,040,000/month 6,240,000/semester ~annual	1,600,000	1,040,000
RMC PAKU	1,000,000/month 6,000,000/semester ~annual	1,539,000	1,000,000
RMC SER	760,000/month 4,560,000/semester ~annual	1,170,000	760,000
RMC SUR	700,000/month 4,200,000/semester ~annual	1,077,000	700,000

Program Leaders :

## Aku dan Ekspresi (KK)

Program Code : EAESSKK

Dalam program ini murid belajar mengekspresikan perasaan, pikiran, dan ide-ide melalui bahasa tubuh, bahasa lisan, seni, gerakan dan musik maupun dukungan teknologi untuk menstimulasi dan mengembangkan aspek kemampuan berbahasa, kreativitas, dan perkembangan emosi anak.

Price:

School Loc.	Type of Class	SSC	
	Offline	1:1	1:4
RMC BDG	620,000/month 3,720,000/semester ~annual	954,000	620,000
RMC BIN	720,000/month 4,320,000/semester ~annual	1,108,000	720,000
RMC CIL	1,040,000/month 6,240,000/semester ~annual	1,600,000	1,040,000
RMC PAKU	1,000,000/month 6,000,000/semester ~annual	1,539,000	1,000,000
RMC SER	760,000/month 4,560,000/semester ~annual	1,170,000	760,000
RMC SUR	700,000/month 4,200,000/semester ~annual	1,077,000	700,000

Program Leaders :



# Service Learning

## Cikal Aksi – Aksi (KK)

Program Code : KSELSKK

Dalam program ini murid belajar untuk mengembangkan rasa kebersamaan dan kepedulian terhadap teman dan orang disekitarnya.

Price:

School Loc.	Type of Class
	Offline
RMC BDG	310,000/month 1,860,000/semester 3,410,000/annual
RMC BIN	360,000/month 2,160,000/semester 3,960,000/annual
RMC CIL	520,000/month 3,120,000/semester 5,720,000/annual
RMC PAKU	500,000/month 3,000,000/semester 5,500,000/annual
RMC SER	380,000/month 2,280,000/semester 4,180,000/annual
RMC SUR	350,000/month 2,100,000/semester 3,850,000/annual

Program Leaders :

Melviani Rayina Eka, Ana Ahmilu, Maya Meidiana, Natalia, Ahmad Fadhillah, Widayanto Suko, Izha Siti Chodizah, Dara Farhana, Litya Prasidiya, Wike Yuniati, Zefanya Dena Talisa , Gilang Puspasari, Novarita Ariefatur Rahmayanti, Muhammad Irfan Faisal, Dewi Parisma, Irma Novitasari, Ayunda Septiani, Ari Budi Kusumastuti, Ana Ahmilu, Fitri Nurhayati, Putri Nurul Aisyah

# Early Childhood

## Aku Sebagai Individu (PK)

Program Code : EASISPK

Dalam program ini murid belajar mengenai diri sendiri sendiri dan cara menjaga diri sendiri (didalam nya termasuk panca indera dan pola hidup sehat).

Price:

School Loc.	Type of Class
	Offline
RMC BDG	660,000/month 3,960,000/semester 7,260,000/annual
RMC BIN	840,000/month 5,040,000/semester 9,240,000/annual
RMC CIL	1,120,000/month 6,720,000/semester 12,320,000/annual
RMC PAKU	1,080,000/month 6,480,000/semester 11,880,000/annual
RMC SER	840,000/month 5,040,000/semester 9,240,000/annual
RMC SUR	740,000/month 4,440,000/semester 8,140,000/annual

Program Leaders :

Bayu Putra Pratama  
Maya Meidiana, Ana Ahmilu ,  
Irma Novitasari, Dewi Parisma, Intan Himawan, Natalia, Widayanto Suko, Litya Prasidiya, Izha Siti Chodizah , Dara Farhana, Litya Prasidiya , Wike Yuniati Gilang Puspasari, Ari Budi kusumastuti , Fitri Nurhayati, Putri Nurul Aisyah, Zefanya Dena Talisa, Ina Fitriyanti, Dina Islamah, Gracia C. C. Rininama, Dian Avenia

## Aku Sebagai Warga Dunia (PK)

Program Code : EASWSPK

Dalam program ini murid belajar mengenai interaksi antar makhluk hidup lain serta tanggung jawab sebagai warga dunia (didalamnya termasuk peran dan kebutuhan makhluk hidup, habitat dan lingkungannya).

Price:

School Loc.	Type of Class
	Offline
RMC BDG	660,000/month 3,960,000/semester 7,260,000/annual
RMC BIN	840,000/month 5,040,000/semester 9,240,000/annual
RMC CIL	1,120,000/month 6,720,000/semester 12,320,000/annual
RMC PAKU	1,080,000/month 6,480,000/semester 11,880,000/annual
RMC SER	840,000/month 5,040,000/semester 9,240,000/annual
RMC SUR	740,000/month 4,440,000/semester 8,140,000/annual

Program Leaders :

Bayu Putra Pratama  
Maya Meidiana, Ana Ahmilu ,  
Irma Novitasari, Dewi Parisma, Intan Himawan, Natalia, Widayanto Suko, Litya Prasidiya, Izha Siti Chodizah , Dara Farhana, Litya Prasidiya , Wike Yuniati Gilang Puspasari, Ari Budi kusumastuti , Fitri Nurhayati, Putri Nurul Aisyah, Zefanya Dena Talisa, Ina Fitriyanti, Dina Islamah, Gracia C. C. Rininama, Dian Avenia

# Early Childhood

## Aku dan Eksplorasiku (PK)

Program Code : EAEPSPK

Dalam program ini murid belajar menstimulasi pemahaman terhadap hal-hal yang terjadi di sekitarnya melalui kemampuan semua penginderaan anak dalam memaknai dunia dan konteks kehidupan sehingga mereka menjadi anak yang percaya diri, berani mencoba, serta memiliki rasa ingin tahu terhadap fenomena yang ada dalam kehidupan mereka.

### Price:

School Loc.	Type of Class	SSC	
	Offline	1:1	1:4
RMC BDG	600,000/month 3,960,000/semester -/annual	1,016,000	660,000
RMC BIN	840,000/month 5,040,000/semester -/annual	1,293,000	840,000
RMC CIL	1,120,000/month 6,720,000/semester -/annual	1,724,000	1,120,000
RMC PAKU	1,080,000/month 6,480,000/semester -/annual	1,662,000	1,080,000
RMC SER	840,000/month 5,040,000/semester -annual	1,293,000	840,000
RMC SUR	740,000/month 4,440,000/semester -/annual	1,139,000	740,000

### Program Leaders :

## Aku dan Ekspresiku (PK)

Program Code : EAESSPK

Dalam program ini murid belajar mengekspresikan perasaan, pikiran, dan ide-ide melalui bahasa tubuh, bahasa lisan, seni, gerakan dan musik maupun dukungan teknologi untuk menstimulasi dan mengembangkan aspek kemampuan berbahasa, kreativitas, dan perkembangan emosi anak.

### Price:

School Loc.	Type of Class	SSC	
	Offline	1:1	1:4
RMC BDG	600,000/month 3,960,000/semester -/annual	1,016,000	660,000
RMC BIN	840,000/month 5,040,000/semester -/annual	1,293,000	840,000
RMC CIL	1,120,000/month 6,720,000/semester -/annual	1,724,000	1,120,000
RMC PAKU	1,080,000/month 6,480,000/semester -/annual	1,662,000	1,080,000
RMC SER	840,000/month 5,040,000/semester -annual	1,293,000	840,000
RMC SUR	740,000/month 4,440,000/semester -/annual	1,139,000	740,000

### Program Leaders :

# Service Learning

## Cikal Aksi–Aksi (PK)

Program Code : KSELSPK

Dalam program ini murid belajar untuk mengembangkan rasa kebersamaan dan kepedulian terhadap teman dan orang disekitarnya.

### Price:

School Loc.	Type of Class
	Offline
RMC BDG	330,000/month 1,980,000/semester 3,630,000/annual
RMC BIN	420,000/month 2,520,000/semester 4,620,000/annual
RMC CIL	560,000/month 3,360,000/semester 6,160,000/annual
RMC PAKU	540,000/month 3,240,000/semester 5,940,000/annual
RMC SER	420,000/month 2,520,000/semester 4,620,000/annual
RMC SUR	370,000/month 2,220,000/semester 4,070,000/annual

### Program Leaders :

Bayu Putra Pratama  
Maya Meidiana, Ana Ahmilu ,  
Irma Novitasari, Dewi Parisma, Intan  
Himawan, Natalia, Widayanto Suko, Litya  
Prasidiya, Izha Siti Chodizah , Dara  
Farhana, Litya Prasidiya , Wike Yuniati  
Gilang Puspasari, Ari Budi kusumastuti ,  
Fitri Nurhayati, Putri Nurul Aisyah, Zefanya  
Dena Talisa, Ina Fitriyanti, Dina Islamah,  
Gracia C. C. Rininama, Dian Avenia



# Physical and Health Education

## Field Games Exploratory (KK – PK)

Program Code : HFGESKKPK

In this program students will engage in exercise to increase flexibility, motor skills, hand-eye coordination and balance. The program is delivered in the form of physical games and fun exercise. Through field games students will also be trained to listen and follow instructions and develop commitment through following basic rules and regulations in sports.

### Price:

School Loc.	Type of Class
	Offline
RMC BIN	~month 1,750,000/semester ~annual
RMC CIL	~month 2,600,000/semester ~annual
RMC SER	~month 1,750,000/semester ~annual

### Program Leaders :

Desi Rosita  
Gilang Puspasari  
Putri Nurul Aisyah

## Swimming Novice (KK – PK)

Program Code : HSWOSKKRS

In this program students will learn lifelong skill that could save life. Students will learn to increase their comfort-level with the water and later on to combine skills to increase endurance.

### Price:

School Loc.	Type of Class
	Offline
RMC SUR	~month 1,380,000/semester ~annual
SC SUR	~month 1,380,000/semester ~annual

### Program Leaders :

Desi Rosita  
Gilang Puspasari  
Putri Nurul Aisyah

# Physical and Health Education

## Taekwondo Exploratory (KK – PK)

Program Code : HTWESKKPK

In this program, students will learn about martial art. Through Taekwondo movement, students will develop their motor coordination, physical strength, and balance.

### Price:

School Loc.	Type of Class
	Offline
RMC SUR	217,000/month 1,302,000/semester ~annual

### Program Leaders :

Desi Rosita  
Gilang Puspasari  
Putri Nurul Aisyah

# Religion Studies

## Quranic Exploratory (KK – PK)

Program Code : RQCESKKPK

In this program students will learn how to read Qur'an in accordance with the rules taught by Rasulullah SAW. For this level, they will be exposed with different shape and sound to introduce the students with Arabic Letter.

Price:

School Loc.	Type of Class
	Offline
RMC PAKU	-/month 2,500,000/semester -/annual
RMC SUR	-/month 1,090,000/semester -/annual

Program Leaders :

Ambar Ayuningtyas  
Muhammad Ufi Ishbar  
Nur Kamilia

# The Arts

## Art and Crafts Exploratory (KK – PK)

Program Code : AACESKKPK

This program will provide opportunity for hands-on creation, explore different media and tools, develop their motor skills and eye-hand coordination through art activities.

Price:

School Loc.	Type of Class
	Offline
RMC SUR	-/month 1,030,000/semester -/annual

Program Leaders :

Novarita Ariefatur Rahmayanti  
Gracia C. C. Ririnama

## Music & Movement Exploratory (KK – PK)

Program Code : AMMESKKPK

This program will encourage students to work on their motor skills and physical coordination, while learn about sounds,rhytm, and pattern.

Price:

School Loc.	Type of Class
	Offline
RMC BIN	-/month 1,900,000/semester -/annual

Program Leaders :

NT



# The Arts

## SMC Taman Bermain Musik Exploratory (KK – PK)

**Program Code : ATBESKKPK**

This program will help the students' in early development to learn sounds and meaning of words. Learning music ignites all areas of students' development and skills for school readiness, including intellectual, social-emotional, motor, language, and overall literacy. It will also give the students choice and voice to learn the basic skills of playing string instruments as a channel to express emotion and creativity.

### Price:

School Loc.	Type of Class
	Offline
RMC CIL	~ /month 2,600,000/semester ~ /annual
RMC PAKU	~ /month 2,600,000/semester ~ /annual
RMC SER	~ /month 1,900,000/semester ~ /annual
RMC SUR	~ /month 1,030,000/semester ~ /annual

### Program Leaders :

Rendra Purnama

## Painting Beginner (KK – RS)

**Program Code :APTBSKKY4**

In this program, students explore and develop ways to express ideas and thoughts in the form painting. They will learn to generate & express ideas independently and as collaborators for group projects, recognize and use all stages of the creative process and more importantly develop confidence and experience joy through creative expression.

### Price:

School Loc.	Type of Class
	Offline
RMC CIL	~ /month 2,800,000/semester ~ /annual
RMC PAKU	~ /month 2,700,000/semester ~ /annual
RMC SER	~ /month 2,000,000/semester ~ /annual
RMC SUR	~ /month 1,260,000/semester ~ /annual
RMC BIN	~ /month 2,100,000/semester ~ /annual

### Program Leaders :

Irma Novitasari, Dewi Parisma, Litya Prasidiya, Widayanto Suko, Ari Budi Kumumastuti, Gilang Puspita, Gesta Maulida Pattiasina, Azura Safira Suyudono. Gabriella Dinarjati Putri Arthemina, Chendra Mitra Affandi



# Program Description

## SSC Program

# SSC

## Personal Development

### Relationship (AA)

Program Code : XRELSAA

This program will support individuals to develop their ability to communicate clearly, listen well, cooperate with others, manage social pressure, negotiate conflict constructively, and seek and offer help when needed.

### Self – Awareness (AA)

Program Code : XSLASAA

This program will support individuals to recognize one's own emotions, thoughts, and values and how they influence their behaviours. Students will learn to assess their strengths and limitations as a process to shape the comprehensive understanding about themselves.

School Loc.	Type of Class
	Offline
RMC BDG	-/month -/semester -/annual
RMC BIN	-/month -/semester -/annual
RMC CIL	-/month -/semester -/annual
RMC PAKU	-/month -/semester -/annual
RMC SER	-/month -/semester -/annual
RMC SUR	-/month -/semester -/annual

#### Program Leaders :

Fitri Setyo

School Loc.	Type of Class
	Offline
RMC BDG	-/month -/semester -/annual
RMC BIN	-/month -/semester -/annual
RMC CIL	-/month -/semester -/annual
RMC PAKU	-/month -/semester -/annual
RMC SER	-/month -/semester -/annual
RMC SUR	-/month -/semester -/annual

#### Program Leaders :

Khairani Rizki Prasetya



# SSC

## Personal Development

### Self – Management (AA)

Program Code : XRELSAA

This program will support individuals to regulate one’s emotions, thoughts, and behaviors in different situations. They will learn to manage stress, control their impulses, and motivate themselves by setting personal and academic goals.

School Loc.	Type of Class
	Offline
RMC BDG	-/month -/semester -/annual
RMC BIN	-/month -/semester -/annual
RMC CIL	-/month -/semester -/annual
RMC PAKU	-/month -/semester -/annual
RMC SER	-/month -/semester -/annual
RMC SUR	-/month -/semester -/annual

Program Leaders :

Maria Mulya Gunafin

# SSC Therapy

### Intensive Occupational Therapy for Children (AA)

Program Code : WIOTSAA

This program will support individuals who have challenges related with fine and gross motor skills as well as motor planning. It helps children get better at academic functioning.

School Loc.	Type of Class
	Offline
RMC BDG	-/month -/semester -/annual
RMC BIN	-/month -/semester -/annual
RMC CIL	-/month -/semester -/annual
RMC PAKU	-/month -/semester -/annual
RMC SER	-/month -/semester -/annual
RMC SUR	-/month -/semester -/annual

Program Leaders :

### Intensive Sensory Integration Therapy (AA)

Program Code : WISISAA

This program will support individuals who have challenges in sensory processing issues. The usage of play-based sensory-motor activities and the right challenge will influence the way the child responds to sensation, minimising distress, and improving motor skills, adaptive responses, concentration, and interaction with others.

School Loc.	Type of Class
	Offline
RMC BDG	-/month -/semester -/annual
RMC BIN	-/month -/semester -/annual
RMC CIL	-/month -/semester -/annual
RMC PAKU	-/month -/semester -/annual
RMC SER	-/month -/semester -/annual
RMC SUR	-/month -/semester -/annual

Program Leaders :

# SSC Therapy

## Intensive Speech Therapy for Children (AA)

Program Code : WISTSAA

This program will support individuals who have speech and communication disorders with varied approaches in language intervention strategies, articulation therapy, oral-motor therapy to feeding, swallowing, and drinking.

School Loc.	Type of Class
	Offline
RMC BDG	-/month -/semester -/annual
RMC BIN	-/month -/semester -/annual
RMC CIL	-/month -/semester -/annual
RMC PAKU	-/month -/semester -/annual
RMC SER	-/month -/semester -/annual
RMC SUR	-/month -/semester -/annual

Program Leaders :

## Regular Occupational Therapy for Children (AA)

Program Code : WROTSAA

This program will support individuals who have challenges related with fine and gross motor skills as well as motor planning. It helps children get better at academic functioning.

School Loc.	Type of Class
	Offline
RMC BDG	-/month -/semester -/annual
RMC BIN	-/month -/semester -/annual
RMC CIL	-/month -/semester -/annual
RMC PAKU	-/month -/semester -/annual
RMC SER	-/month -/semester -/annual
RMC SUR	-/month -/semester -/annual

Program Leaders :

# SSC Therapy

## Regular Sensory Integration Therapy (AA)

Program Code : WRSISAA

This program will support individuals who have challenges in sensory processing issues. The usage of play-based sensory-motor activities and the right challenge will influence the way the child responds to sensation, minimising distress, and improving motor skills, adaptive responses, concentration, and interaction with others.

School Loc.	Type of Class
	Offline
RMC BDG	-/month -/semester -/annual
RMC BIN	-/month -/semester -/annual
RMC CIL	-/month -/semester -/annual
RMC PAKU	-/month -/semester -/annual
RMC SER	-/month -/semester -/annual
RMC SUR	-/month -/semester -/annual

Program Leaders :

## Regular Speech Therapy for Children (AA)

Program Code : WRSTSAA

This program will support individuals who have speech and communication disorders with varied approaches in language intervention strategies, articulation therapy, oral-motor therapy to feeding, swallowing, and drinking.

School Loc.	Type of Class
	Offline
RMC BDG	-/month -/semester -/annual
RMC BIN	-/month -/semester -/annual
RMC CIL	-/month -/semester -/annual
RMC PAKU	-/month -/semester -/annual
RMC SER	-/month -/semester -/annual
RMC SUR	-/month -/semester -/annual

Program Leaders :

# SSC

## Early Intervention

### Early Intervention (KK – PK)

**Program Code : USEISKKPK**

This program is designed to support students who are suitable for functional program. Students will develop their communication and social skills in varied context from one-on-one interaction, small group interaction, classroom setting and community.

School Loc.	Type of Class
	Offline
RMC BIN	2,805,000/month 16,830,000/semester 30,855,000/annual
RMC CIL	3,145,000/month 18,870,000/semester 34,595,000/annual
RMC PAKU	2,975,000/month 17,850,000/semester 32,725,000/annual
RMC SER	2,805,000/month 16,830,000/semester 30,855,000/annual
RMC SUR	2,975,000/month 17,850,000/semester 32,725,000/annual

**Program Leaders :**

Ana Ahmilu  
Ari Budi kusumastuti

# SSC

## Personal Development

### Relationship (KK)

**Program Code : XRELSKK**

This program will support individuals to develop their ability to communicate clearly, listen well, cooperate with others, manage social pressure, negotiate conflict constructively, and seek and offer help when needed.

School Loc.	Type of Class
	Offline
RMC BDG	~/month ~/semester ~/annual
RMC BIN	~/month ~/semester ~/annual
RMC PAKU	~/month ~/semester ~/annual
RMC SER	~/month ~/semester ~/annual
RMC SUR	~/month ~/semester ~/annual
RMC CIL	~/month ~/semester ~/annual

**Program Leaders :**

Fitri Setyo

### Self – Awareness (KK)

**Program Code : XSLASKK**

This program will support individuals to recognize one's own emotions, thoughts, and values and how they influence their behaviours. Students will learn to assess their strengths and limitations as a process to shape the comprehensive understanding about themselves.

School Loc.	Type of Class
	Offline
RMC BDG	~/month ~/semester ~/annual
RMC BIN	~/month ~/semester ~/annual
RMC PAKU	~/month ~/semester ~/annual
RMC SER	~/month ~/semester ~/annual
RMC SUR	~/month ~/semester ~/annual
RMC CIL	~/month ~/semester ~/annual

**Program Leaders :**

Khairani Rizki Prasetya



# SSC

## Personal Development

### Self – Management (KK)

Program Code : XSLMSKK

This program will support individuals to regulate one’s emotions, thoughts, and behaviors in different situations. They will learn to manage stress, control their impulses, and motivate themselves by setting personal and academic goals.

School Loc.	Type of Class
	Offline
RMC BDG	-/month -/semester -/annual
RMC BIN	-/month -/semester -/annual
RMC PAKU	-/month -/semester -/annual
RMC SER	-/month -/semester -/annual
RMC SUR	-/month -/semester -/annual
RMC CIL	-/month -/semester -/annual

Program Leaders :

Maira Mulya Gunafin

# SSC Therapy

### Intensive Occupational Therapy for Children (KK)

Program Code : WIOTSKK

This program will support individuals who have challenges related with fine and gross motor skills as well as motor planning. It helps children get better at academic functioning.

School Loc.	Type of Class
	Offline
RMC BDG	-/month -/semester -/annual
RMC BIN	-/month -/semester -/annual
RMC PAKU	-/month -/semester -/annual
RMC SER	-/month -/semester -/annual
RMC SUR	-/month -/semester -/annual
RMC CIL	-/month -/semester -/annual

Program Leaders :

### Intensive Sensory Integration Therapy (KK)

Program Code : WISISKK

This program will support individuals who have challenges in sensory processing issues. The usage of play-based sensory-motor activities and the right challenge will influence the way the child responds to sensation, minimising distress, and improving motor skills, adaptive responses, concentration, and interaction with others.

School Loc.	Type of Class
	Offline
RMC BDG	-/month -/semester -/annual
RMC BIN	-/month -/semester -/annual
RMC PAKU	-/month -/semester -/annual
RMC SER	-/month -/semester -/annual
RMC SUR	-/month -/semester -/annual
RMC CIL	-/month -/semester -/annual

Program Leaders :

# SSC Therapy

## Intensive Speech Therapy for Children (KK)

Program Code : WISTSKK

This program will support individuals who have speech and communication disorders with varied approaches in language intervention strategies, articulation therapy, oral-motor therapy to feeding, swallowing, and drinking.

School Loc.	Type of Class
	Offline
RMC BDG	-/month -/semester -/annual
RMC BIN	-/month -/semester -/annual
RMC PAKU	-/month -/semester -/annual
RMC SER	-/month -/semester -/annual
RMC SUR	-/month -/semester -/annual
RMC CIL	-/month -/semester -/annual

Program Leaders :

## Regular Occupational Therapy for Children (KK)

Program Code : WROTSKK

This program will support individuals who have challenges related with fine and gross motor skills as well as motor planning. It helps children get better at academic functioning.

School Loc.	Type of Class
	Offline
RMC BDG	-/month -/semester -/annual
RMC BIN	-/month -/semester -/annual
RMC PAKU	-/month -/semester -/annual
RMC SER	-/month -/semester -/annual
RMC SUR	-/month -/semester -/annual
RMC CIL	-/month -/semester -/annual

Program Leaders :

# SSC Therapy

## Regular Sensory Integration Therapy (KK)

Program Code : WRSISKK

This program will support individuals who have challenges in sensory processing issues. The usage of play-based sensory-motor activities and the right challenge will influence the way the child responds to sensation, minimising distress, and improving motor skills, adaptive responses, concentration, and interaction with others.

School Loc.	Type of Class
	Offline
RMC BDG	-/month -/semester -/annual
RMC BIN	-/month -/semester -/annual
RMC PAKU	-/month -/semester -/annual
RMC SER	-/month -/semester -/annual
RMC SUR	-/month -/semester -/annual
RMC CIL	-/month -/semester -/annual

Program Leaders :

## Regular Speech Therapy for Children (KK)

Program Code : WRSTSKK

This program will support individuals who have speech and communication disorders with varied approaches in language intervention strategies, articulation therapy, oral-motor therapy to feeding, swallowing, and drinking.

School Loc.	Type of Class
	Offline
RMC BDG	-/month -/semester -/annual
RMC BIN	-/month -/semester -/annual
RMC PAKU	-/month -/semester -/annual
RMC SER	-/month -/semester -/annual
RMC SUR	-/month -/semester -/annual
RMC CIL	-/month -/semester -/annual

Program Leaders :

# SSC

## Personal Development

### Relationship (PK)

Program Code : XRELSPK

This program will support individuals to develop their ability to communicate clearly, listen well, cooperate with others, manage social pressure, negotiate conflict constructively, and seek and offer help when needed.

School Loc.	Type of Class
	Offline
RMC BDG	-/month -/semester -/annual
RMC BIN	-/month -/semester -/annual
RMC PAKU	-/month -/semester -/annual
RMC SER	-/month -/semester -/annual
RMC SUR	-/month -/semester -/annual
RMC CIL	-/month -/semester -/annual

Program Leaders :

Fitri Setyo

### Self – Awareness (PK)

Program Code : XSLASPK

This program will support individuals to recognize one’s own emotions, thoughts, and values and how they influence their behaviours. Students will learn to assesses their strengths and limitations as a process to shape the comprehensive understanding about themselves.

School Loc.	Type of Class
	Offline
RMC BDG	-/month -/semester -/annual
RMC BIN	-/month -/semester -/annual
RMC PAKU	-/month -/semester -/annual
RMC SER	-/month -/semester -/annual
RMC SUR	-/month -/semester -/annual
RMC CIL	-/month -/semester -/annual

Program Leaders :

Khairani Rizki Prasetya

# SSC

## Personal Development

### Self – Management (PK)

Program Code : XSLMSPK

This program will support individuals to regulate one’s emotions, thoughts, and behaviors in different situations. They will learn to manage stress, control their impulses, and motivate themselves by setting personal and academic goals.

School Loc.	Type of Class
	Offline
RMC BDG	-/month -/semester -/annual
RMC BIN	-/month -/semester -/annual
RMC PAKU	-/month -/semester -/annual
RMC SER	-/month -/semester -/annual
RMC SUR	-/month -/semester -/annual
RMC CIL	-/month -/semester -/annual

Program Leaders :

Maria Mulya Gunafin



# SSC Therapy

## Intensive Occupational Therapy for Children (PK)

Program Code : WIOTSPK

This program will support individuals who have challenges related with fine and gross motor skills as well as motor planning. It helps children get better at academic functioning.

School Loc.	Type of Class
	Offline
RMC BDG	-/month -/semester -/annual
RMC BIN	-/month -/semester -/annual
RMC PAKU	-/month -/semester -/annual
RMC SER	-/month -/semester -/annual
RMC SUR	-/month -/semester -/annual
RMC CIL	-/month -/semester -/annual

Program Leaders :

## Intensive Sensory Integration Therapy (PK)

Program Code : WISIPK

This program will support individuals who have challenges in sensory processing issues. The usage of play-based sensory-motor activities and the right challenge will influence the way the child responds to sensation, minimising distress, and improving motor skills, adaptive responses, concentration, and interaction with others.

School Loc.	Type of Class
	Offline
RMC BDG	-/month -/semester -/annual
RMC BIN	-/month -/semester -/annual
RMC PAKU	-/month -/semester -/annual
RMC SER	-/month -/semester -/annual
RMC SUR	-/month -/semester -/annual
RMC CIL	-/month -/semester -/annual

Program Leaders :

# SSC Therapy

## Intensive Speech Therapy for Children (PK)

Program Code : WISTSPK

This program will support individuals who have speech and communication disorders with varied approaches in language intervention strategies, articulation therapy, oral-motor therapy to feeding, swallowing, and drinking.

School Loc.	Type of Class	Type of Class
	Offline	Blended
RMC BDG	-/month -/semester -/annual	
RMC BIN	-/month -/semester -/annual	-/month -/semester -/annual
RMC PAKU	-/month -/semester -/annual	
RMC SER	-/month -/semester -/annual	
RMC SUR	-/month -/semester -/annual	-/month -/semester -/annual
RMC CIL	-/month -/semester -/annual	

Program Leaders :

## Regular Occupational Therapy for Children (PK)

Program Code : WROTSPK

This program will support individuals who have challenges related with fine and gross motor skills as well as motor planning. It helps children get better at academic functioning.

School Loc.	Type of Class
	Offline
RMC BDG	-/month -/semester -/annual
RMC BIN	-/month -/semester -/annual
RMC PAKU	-/month -/semester -/annual
RMC SER	-/month -/semester -/annual
RMC SUR	-/month -/semester -/annual
RMC CIL	-/month -/semester -/annual

Program Leaders :

# SSC Therapy

## Regular Sensory Integration Therapy (PK)

Program Code : WRSISPK

This program will support individuals who have challenges in sensory processing issues. The usage of play-based sensory-motor activities and the right challenge will influence the way the child responds to sensation, minimising distress, and improving motor skills, adaptive responses, concentration, and interaction with others.

School Loc.	Type of Class
	Offline
RMC BDG	-/month -/semester -/annual
RMC BIN	-/month -/semester -/annual
RMC PAKU	-/month -/semester -/annual
RMC SER	-/month -/semester -/annual
RMC SUR	-/month -/semester -/annual
RMC CIL	-/month -/semester -/annual

Program Leaders :

## Regular Speech Therapy for Children (PK)

Program Code : WRSTSPK

This program will support individuals who have speech and communication disorders with varied approaches in language intervention strategies, articulation therapy, oral-motor therapy to feeding, swallowing, and drinking.

School Loc.	Type of Class	Type of Class
	Offline	Blended
RMC BDG	-/month -/semester -/annual	
RMC BIN	-/month -/semester -/annual	-/month -/semester -/annual
RMC PAKU	-/month -/semester -/annual	
RMC SER	-/month -/semester -/annual	
RMC SUR	-/month -/semester -/annual	-/month -/semester -/annual
RMC CIL	-/month -/semester -/annual	

Program Leaders :





# School Location

## Rumah Main Cikal



### Rumah Main Cikal Serpong

Jl. Ciater Rawa Mekar Jaya, Serpong

Phone : +6221 751 0378  
WA : +62 853-1315-9590  
E-mail : info.rmccilandak@cikal.co.id



### Rumah Main Cikal Pakubuwono

Jl. Pakubowono VI No. 2, Kebayoran Baru

Phone : +6221 722 1194  
WA : +62 877-2555-4100  
E-mail : info.rmcpakubuwono@cikal.co.id



### Rumah Main Cikal Cilandak

Jl. Intan No. 9, RT 7/RW 2, Cilandak, Jakarta Selatan

Phone : +6221 751 0378  
WA : +62 811-1723-551  
E-mail : info.rmccilandak@cikal.co.id



### Rumah Main Cikal Bintaro

Heritage Bintaro Junction, Lantai 2  
Jl. Jend. Sudirman Kav. A3, Pusat Kawasan Niaga Bintaro (BTC), Sektor 7, Bintaro Jaya

Phone : +6221 2942 7668  
WA : +62 852-1773-7124  
E-mail : info.rmcbintaro@cikal.co.id



### Rumah Main Cikal Bandung

Jl. Bengawan No.23, Cihapit, Bandung Wetan, Bandung

Phone : +6222 720 4191  
WA : +62 813-2076-3026  
E-mail : info.rmccilandak@cikal.co.id



### Rumah Main Cikal Surabaya

Jl. Raya Lontar No. 103, Kelurahan Lontar, Kecamatan Sambikerep

Phone : +6231 7527900  
WA : +62 815-1550-1010  
E-mail : info.surabaya@cikal.co.id





# Rumah Main Cikal

 @RumahMainCikal

 @rumahmaincikal

 Rumah Main Cikal

 Sekolah Cikal Official

# Sekolah Cikal

 @sekolahcikal

 @sekolahcikal

 Sekolah Cikal

 Sekolah Cikal Official